



## Transportable Office

# Various Building Sizes Available To Suit Your Needs

Our transportable buildings are available in the following sizes: 6x3m, 12x3m, 12x6m, 12x9m.

## Standard Transportable Office Buildings Inclusions

### INTERIOR INCLUSIONS

- Office Chairs
- Office Desks
- Filing Cabinets
- Curtains
- Bookcases
- Air Conditioning

### EXTERIOR INCLUSIONS

- Lighting
- Security Grills

### OPTIONAL EXTRAS

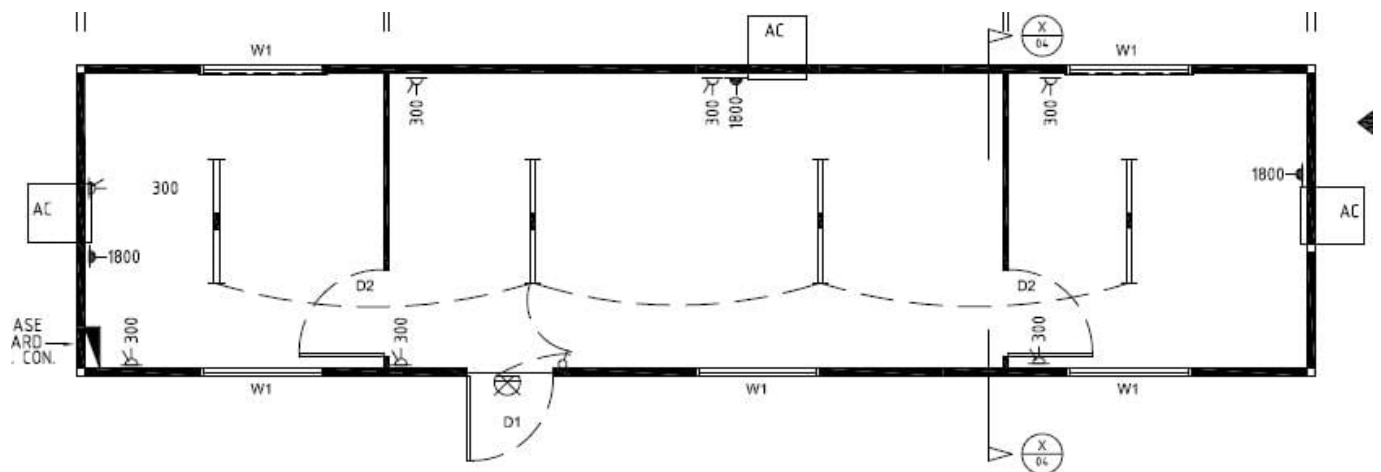
- Additional Furniture

**1300 591 670**

1300 591 670  
info@ascension.com.au  
23 Boydell Road, Kenwick WA



## FLOOR PLAN



## GALLERY



1300 591 670

1300 591 670  
info@ascension.com.au  
23 Boydell Road, Kenwick WA



# FAQs About Portable Office Buildings

## What is a site office?

A site office is a modular, prefabricated office which can be made from insulated panel.

It offers many benefits over traditional buildings, including cost-effectiveness, flexibility, ease of installation, and mobility.

Site offices can also be customised to meet specific needs and requirements of the client.